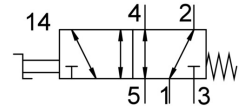


Hand lever valve VHEF-HS-M52-M-G18

Part number: 4165855

FESTO



[General operating condition](#)

Datasheet product reliability

The information in this "Product reliability data sheet" is based on products being used as intended. This includes complying with all specifications in data sheets, catalogues, user documentation and the general operating conditions. The user alone is responsible for determining whether a product is suitable for a particular application.

Feature	Value
Well-trieed component ¹⁾	Yes
Max. switching frequency	0,5 Hz
Lap	Overlap

- 1) The product is a well-trieed product for a safety-related application according to ISO 13849-1. The relevant basic and well-trieed safety principles according ISO 13849-2 for this product are fulfilled. The suitability of the product for a precise application must be verified and confirmed by the user.